



RSB-S12/12
Clamp lining



Clamp lining for SCF12 and RSF12 cable

Features / Benefits

The clamp lining has been designed to be used in combination with the RSB-Clip RSB-12 and RSB-12-IT. The use of the clamp lining in combination with RSB-Clip prevents SCF12-50 Jumper cables against damage e.g. due to cable movement by wind, therefore a deterioration of the electrical properties is avoided.

Technical Features

GENERAL SPECIFICATIONS

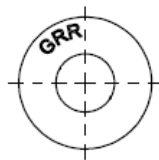
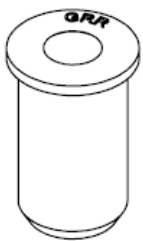
Product Type	Clamp Lining
Cable Type	Superflexible Coaxial Foam Dielectric
Color	Black

MECHANICAL SPECIFICATIONS

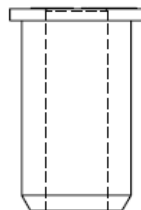
Cable Size	1/2
Number of Cable / Waveguide Runs	1
Material	Material: EPDM UV resistant

TESTING AND ENVIRONMENTAL


Operation Temperature	-50°C to 85°C (-58°F to 185°F)
-----------------------	--------------------------------



ØD=15-16mm
Ød=12-14mm



Related Documents

 [Installation Instruction for Jumper with RSB-S12/12](#)
Installation Instructions