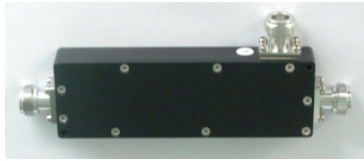




CDS20DE-694/3800

20dB Directional Coupler

RFS CDS**E series Directional Coupler has been designed for outdoor applications covering 694 to 3800MHz. Units couple off a defined fraction of signal from 6 to 30 dB with minimal reflections or loss. The frequency range allows use with antennas and leaky cable systems and in wireless base stations. With minimal solder joints, the dissipative loss has been minimized and reliability enhanced.



Features / Benefits

- **20 dB coupling value**
- **Low insertion loss**
- **High power handling**
- **Small size, Low weight**
- **716-female connectors**
- **-155 dBc PIM**

Technical Features

STRUCTURE

Product Type	Directional Coupler
Number of Input Ports	1
Number of Output Ports	2
Connector Type	716 female

ELECTRICAL SPECIFICATIONS

lower frequency	upper frequency
694	3800
Impedance	50 Ω
Insertion Loss max.	0.2 dB
Max. VSWR / Return Loss	1.25 (19.1)
Intermodulation (IM3)	-155 dBc with 2x43 dBm tones
Coupling Value	20 dB
Directivity min.	20
Total Input Power	200 W

TEMPERATURE SPECIFICATIONS

Temperature Range	-25°C to 65°C (-13°F to 149°F)
-------------------	--------------------------------

MECHANICAL SPECIFICATIONS

Height	16.5mm (0.65in)
Width	63.2mm (2.49in)
Length	159.4mm (6.28in)

TESTING AND ENVIRONMENTAL

Environmental Class	IP65
---------------------	------

[External Document Links](#)

[Notes](#)