



716F-LCF114-C02

7-16 DIN Female Connector for 1-1/4" Coaxial Cable, OMNI FIT™ standard, O-ring sealing



OMNI FIT™ high performance connectors are designed for use with both CELLFLEX® (copper) and CELLFLEX® Lite (aluminum) cables. They are designed specifically to provide the highest quality connector-cable interface while simplifying and speeding up connector attachment. All RFS connectors are fully tested for mechanical and electrical compliance to industry specifications. The 7-16 connector is the most rugged RF connection meeting all requirements even under the most severe environmental conditions.

Features / Benefits

- Cost effective two-piece design for safe and easy installation
- Compatible with copper and aluminium cable types i.e. one connector for both outer conductor materials eliminates the risk of faulty connector installation and helps to keep inventory down
- Robust mechanical design for low and consistent intermodulation performance i.e. keeps the mobile network performance up reduces the number of dropped calls and avoids revenue losses
- Superior electrical performance for consistent and repeatable VSWR i.e. ensure network system performance
- Waterproof to IP 68 i.e. no downtime risk, secures revenue
- RoHS (EU) and CRoHS (China) compliant i.e. can be used on a global basis

Technical Features

STRUCTURE

Cable Type	LCF
Cable Size	1-1/4"
Qualified Cable Types	LCFS114-50JA / JFNA
Model Series	C02 Standard Series
Connector Interface Size	7/16
Connector Interface Gender	Female

MECHANICAL SPECIFICATIONS

Connector Length	61mm (2in)
Connector Outer Diameter	49mm (2in)
Inner Conductor Material / Coating	Brass Alloy / Silver Plated
Outer Conductor Material / Coating	Brass Alloy / Trimetal Plated
Insulation Material	TPX
Sealing Method	O-Ring

ELECTRICAL SPECIFICATIONS

Nominal Impedance	50 Ω	
Connector Frequency Range	DC - 3.7 GHz GHz	
PIM ratio Typical (2 x 20 W Carrier)	-159 dBc	
Frequency Range	VSWR	Return Loss
0 < f ≤ 1.0 GHz	1.03	36.6
1.0 < f ≤ 2.7 GHz	1.05	32.3
2.7 < f ≤ 3.6 GHz	1.08	28.3

TESTING AND ENVIRONMENTAL

Ingress Protection (IP) Rating	IP68
--------------------------------	------

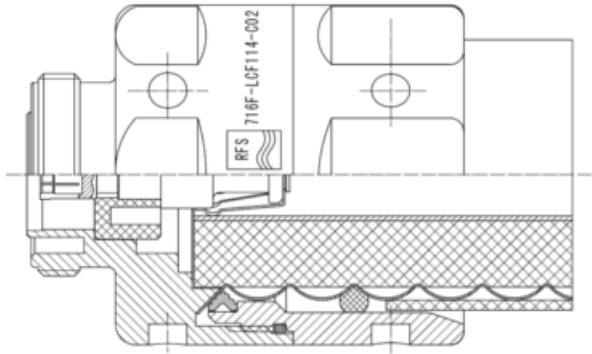


716F-LCF114-C02

7-16 DIN Female Connector for 1-1/4" Coaxial Cable, OMNI FIT™ standard, O-ring sealing

ACCESSORIES

Wrench Size Connector Front Part	45mm (1.772in)
Wrench Size Connector Rear Part	45mm (1.772in)
Poly Hook Spanner	PHS 60-90-12
Trimming Tool	TRIM-SET-L114-C02



Related Documents

 **Application Note**
External Datasheet

 **Installation Instruction **-LCF114-C02**
Installation Instructions