

## RAFIX 16, illuminated selector switch, round collar , 2 x 40°, momentary contact function, illuminable



### Description

RAFIX control devices are modular units consisting of several parts. In the RAFIX 16 family, they always consist of an actuating element and a switching element, or of an indicator lamp and a lamp socket. Actuating elements (such as pushbuttons or emergency stop actuators) have the specified tactility, reset and function only when assembled with the appropriate switching elements. For illuminated actuators, please use switching elements with lamp socket.

With RAFIX 16 actuators, you can choose between three collar shapes: round, square or square side-by-side, where the pushbuttons can be lined up seamlessly. The mounting diameter is 16.2 mm according to the standard. The anti-rotation lug can be easily removed with a screwdriver if necessary.



### technical data

#### > general

|                                                             |                                                                      |
|-------------------------------------------------------------|----------------------------------------------------------------------|
| Collar shape                                                | round                                                                |
| Operating temperature, min.                                 | -25 °C                                                               |
| Operating temperature, max.                                 | 70 °C                                                                |
| Storage temperature, min.                                   | -40 °C                                                               |
| Storage temperature, max.                                   | 85 °C                                                                |
| illuminated                                                 | Yes                                                                  |
| Packaging                                                   | Box                                                                  |
| Packaging unit                                              | 2 pcs.                                                               |
| Net weight                                                  | 8.4 g                                                                |
| Operating life                                              | 30,000 cycles                                                        |
| B10                                                         | 40,000 cycles                                                        |
| Degree of protection, front side, according to DIN EN 60529 | IP65                                                                 |
| Environment resistance                                      | IEC 60068-2-14<br>IEC 60068-2-30<br>IEC 60068-2-33<br>IEC 60068-2-78 |
| Minimum order quantity (MOQ)                                | 10 pcs.                                                              |
| RoHS compliant                                              | Yes                                                                  |
| REACH compliant                                             | Yes                                                                  |
| Country of origin                                           | HU                                                                   |

#### > mounting diameters

|                           |          |
|---------------------------|----------|
| Outside dimension, length | 24.95 mm |
| Outside dimension, width  | 24.95 mm |
| Outside dimension, height | 36.3 mm  |

#### direct links

> [RAFI eCatalog](#)

|                     |                  |
|---------------------|------------------|
| Mounting hole       | 16.2 mm          |
| Mounting depth      | 44.7 mm          |
| Installation height | 17.1 mm          |
| Grid, min.          | 25 x 25 mm       |
| Collar dimension    | 24,95 x 24,95 mm |

**> mechanical data**

|                            |                            |
|----------------------------|----------------------------|
| Fixing                     | Threaded ring              |
| Actuation function         | momentary contact function |
| Operating torque, max.     | 1.3 Nm                     |
| Threaded ring torque, max. | 1.2 Nm                     |
| Rotating angle             | 2 x 40°                    |

**Use according to UL:**

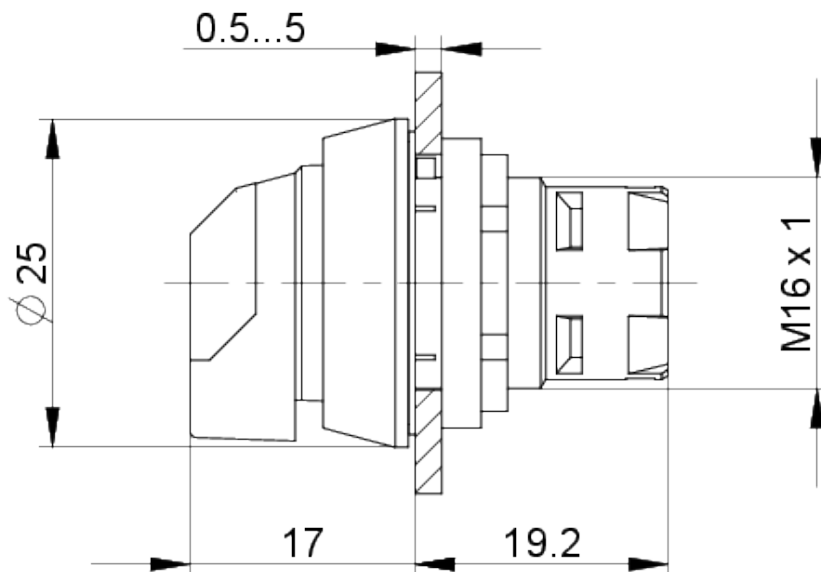
---

RAFIX control devices are defined at RAFI as modular elements, consisting of an actuating element, if necessary a coupling and an individual contact or lighting unit.

Actuating elements (such as pushbuttons, emergency stop actuators, etc.) have the intended tactility, reset and function only when assembled with the appropriate switching elements.

**drawings**

**Dimensioned drawing**



**Mounting hole drawing**

